

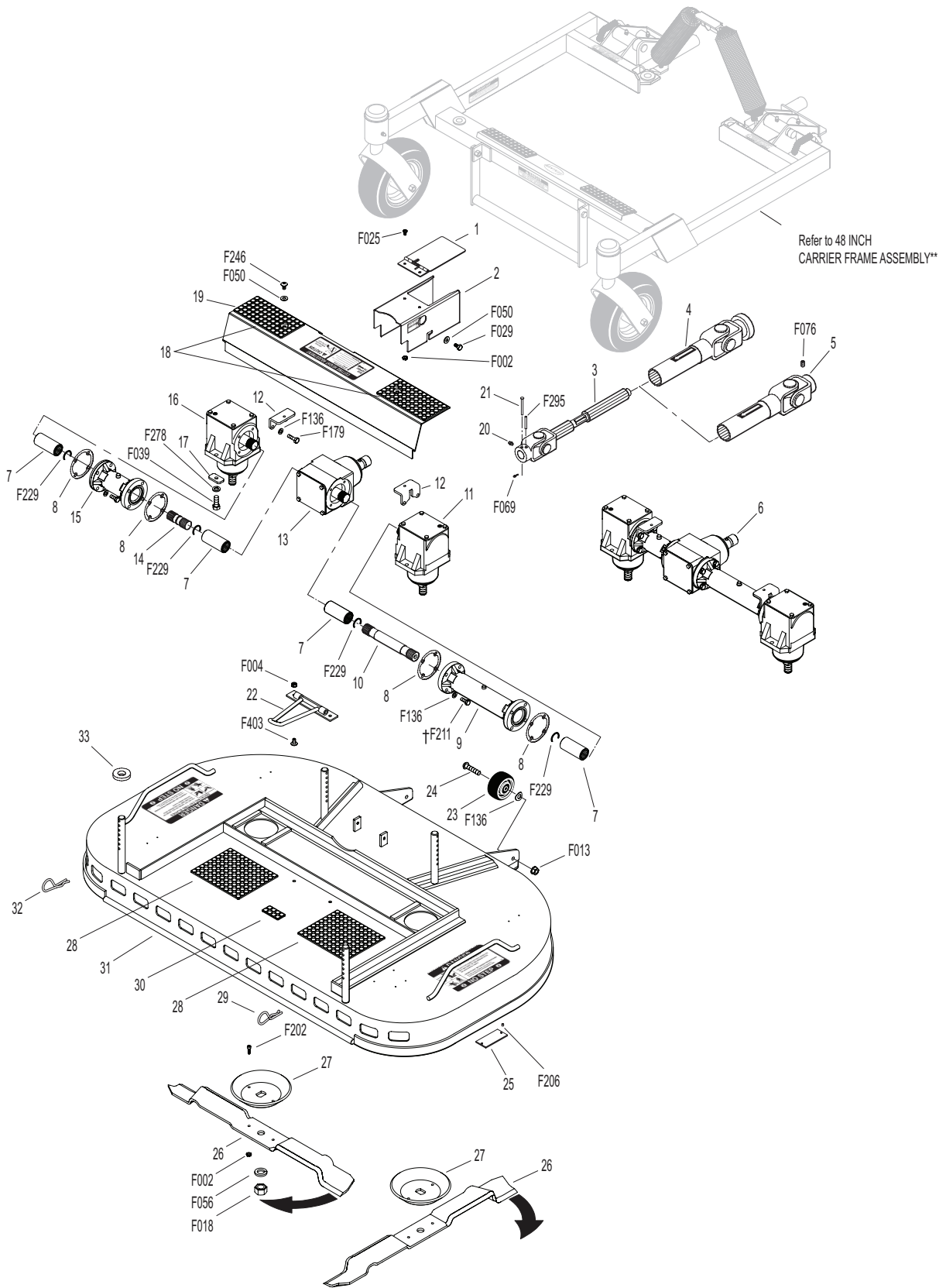
DML42A DECK ASSEMBLY (P/N 5707-1)

ITEM NO.	PART NO.	DESCRIPTION	NO. REQ'D	ITEM NO.	PART NO.	DESCRIPTION	NO. REQ'D
Gearbox and Drive Components				28	8735-10	Rubber Mat (5 x 6)	2
1	8618-1	Cover, PTO Shaft Guard	1	29	7775-1	Hitch Pin, LH (Silver) #6	2
2	8619	PTO Shaft Guard	1	30	8788-1	Rubber Mat (1 x 2)	1
	8618	PTO Shaft Guard Assembly (Includes Items # 1, 2, F002 & F025)	*	31	5701-11	DML42A Deck Housing (Includes Items # 28 & 30)	1
3	5285-15	U-Joint Shaft Assy, 90 Degree, Spline (Includes Items # 21, F069 & F295)	1	32	7775-2	Hitch Pin, RH (Gold) #6	2
4	7275-16	U-Joint Tube Assy, Spline	1	33	5727-1	Washer Shim (5/8 ID)	4
5	5275-15	U-Joint Tube Assy (9.5" OAL), Spline (Includes Item # F076)	1	Fasteners			
6	5704-55	42" Mulch Gearbox Tube Assembly, Cast Iron (Includes Items # 7-16, F136, F179 & F229)	1	F002	10-24 Keps Nut		6
7	6054	Spline Coupling	4	F004	1/4-20 Keps Nut		2
8	P007	Gasket, Cap (Peerless #788030)	4	F013	3/8-16 Whiz Locknut		2
9	5063	Gearbox Connector Tube (8-5/8)	1	F018	5/8-18 Hex Nut		2
10	6732-3	Connecting Shaft (6-1/4)	1	F025	10-24 x 3/8 PPHMS		2
11	5052-8	Blade Drive Gearbox (LH)	1	F029	1/4-20 x 1/2 Hex Bolt		2
12	5704-1	Gearbox Cover Support	2	F038	3/8-16 x 1 Hex Bolt		4
13	5051-6	Tee Gearbox, Shear	1	F050	1/4 SAE Washer		4
14	6732-1	Connecting Shaft (2")	1	F056	5/8 Split Lock Washer		2
15	5062	Gearbox Connector Tube (4-3/8)	1	F059	3/8 Wave Spring Washer		2
16	5053-8	Blade Drive Gearbox (RH)	1	F069	3/32 x 1/2 Cotter Pin		1
17	5052-3	1.375 x .750 x .187 Washer	4	F076	3/8-16 x 5/8 SQH Set Screw		*
18	5747-11	Rubber Mat (3 x 6)	2	F136	AN960C416L Washer		16
19	5785-5	42" Gearbox Cover (Includes Item # 18)	1	F179	1/4-20 x 1 Hex Bolt		4
20	5830	Grease Fitting	1	F202	10-24 x 5/8 SHC Screw, GR5 SS		4
21	8067-13	Shear Pin w/Cotter (Set of 5) (Includes Item # F069)	*	F206	#2 x 3/16 Drive Pin		2
Deck Housing Components				F211	1/4-20 x 7/8 Hex Bolt		12
22	8670	Tilt-Up Hook	1	F229	C-Clip (13/16)		4
23	9772	Roller Wheel Assembly (2-1/2) (Includes Item # F059)	2	F246	1/4-20 x 1/2 PTHMS		2
24	8490	Roller Wheel Axle Bolt	2	F278	3/8 Split Lock Washer		4
25	NS	Deck Serial Number Plate	1	F295	3/16 x 1-1/2 Split Spring Pin		1
26	5705-28	Blade 22" Mulch	2	F403	1/4-20 x 1/2 PTHMS SS		2
	5705-19	DML42A Blade Set W/Hubs (Includes Items # 27, F002 & F202)	*	* Service Part Only			
27	5706	Blade Hub & Trash Guard	2	** The DML42A Mulching Deck uses the 48" Carrier Frame.			

NOTE: Order Item # 4 to use the splined deck PTO shaft with Model MT, MD, MC and MW.

NOTE: Order Item # 5 to use the splined deck PTO shaft with Model MS and MB.

DML42A DECK ASSEMBLY (P/N 5707-1)



Use only genuine **Walker**[®] replacement parts.